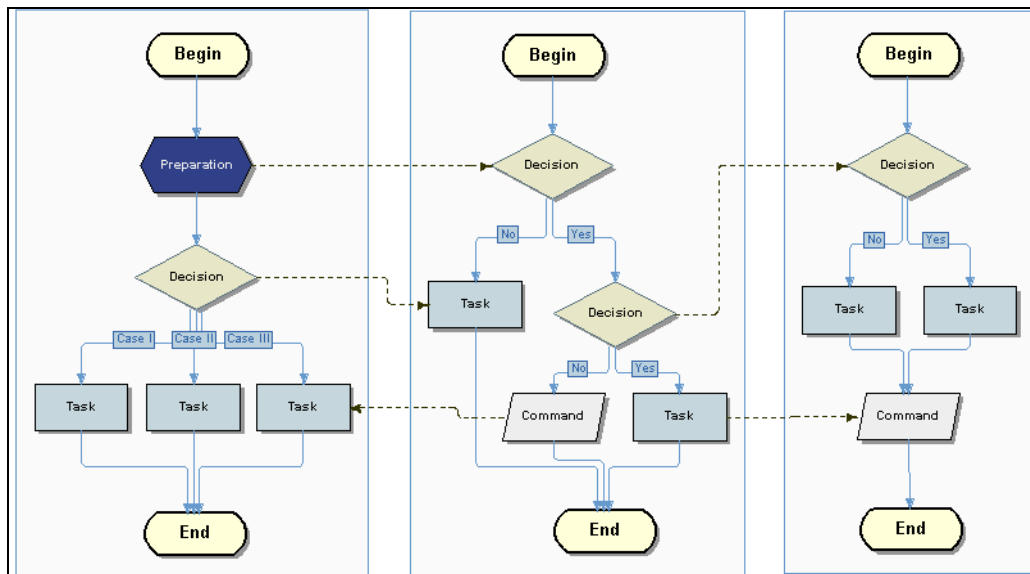




Abstract:

With the Graph Framework you have access to a Java library that enables you to create solutions instantly by using the comprehensive and extendable application programming interfaces and provide your application with an appealing and intuitive user interface.



Basic Features:

Graph Elements

- Graph
- Nodes
- Edges
- Groups (Sub graph)
- Ports
- Attributes with all elements

Graph Analyse Tools

- depth-first search
- breadth-first search
- shortest path
- minimum spanning tree
- topological sort
- transitive closure

Window Toolkit Support

- Swing/AWT support
- JFACE/SWT support

XML Persistence Files



Layout

- Hierarchic
- Tree (Radial, HV, Loop)
- Org chart
- Circular
- Energy
- Group constrained
- Custom Layout
- Separate node and edge Layout
- Layout Animation
- Path finder
- Label placement strategies
- Edge layout (Straight, Orthogonal, context sensitive, path)

Modeling

- Drag & Drop
- Cut/Copy/Paste
- Cut/Copy/Paste (via System Clipboard)
- Undo/Redo
- Grid
- Ruler
- Zoom (Zoom -In -Out, %, Fit to screen, Rectangle)
- Drawing Order
 - toFront / toBack
 - stepUp / stepDown
 - Nodes on top
 - Edges on top
 - Free
- Alignment
 - Left
 - Top
 - Right
 - Bottom
 - Horizontal centered
 - Vertical centered
- Manipulation of elements
 - Moving of elements
 - Changing size of elements
 - Changing size with aspect ratio
 - Programmable behavior at size changing
- Edge contact at ports
- Grouping of Elements
 - Groups inside of groups
- Rules
 - Behavior of Elements
 - Behavior of Graphs
- Automated modeling
 - Edge Creation Mode (using Mouse)
 - Overlay Edge Creation
 - Copy On Move



- Detach On Move
- Adjacent Edge Deletion
- Edge Split
- Edge Cascade
- Callback support for complex actions

Export/Import

- Export
 - Custom rendering
 - Picture formats
 - SVG
 - Customized SVG
 - PDF
 - ImageMap
 - GXL
- Import
 - CSV
 - GXL
-

Application Framework

- Internationalization (German, English, French)
- Attributes
- Preferences
- Object Repository
- Layout Tool Repository
- Attribute Editor
 - Table
 - Tree
 - Renaming of attributes
 - Validation and restrictions
 - Attribute hiding
 - Attribute description
 - Custom Editor
- Navigator
 - Interactive
 - Zoom
 - level of detail
- Preferences
- Document/View architecture
- Rich Text
- ToolTips
- Level of Detail (Zoom, Navigator Graph)
- Printing
 - Print preview
 - Zoom for printing
 - Layout
- DockingGUI (Positioning and docking of GUI elements)
- XML User Interface configuration
- Screen Layout Management



- Application areas:**
- Workflow-, CRM-, ERP-, HR-Applications
 - Any application dealing with structured- or unstructured data

- Use Cases:**
- Workflow diagrams
 - Data flow and process structures
 - Network chart
 - Cause effect graphs
 - Organizational Charts
 - Petrinet-structures
 - Management key performance indicator trees

Tech Table:

JDK Support	JDK 1.4, 1.5
Technologies Supported	Java Foundation Classes Applet Webstart
Browsers Supported	Microsoft Internet Explorer Netscape Navigator
Platforms	OS supporting Java SDK 1.4
Look and Feel	Custom Java Look&Feel Windows
International Versions	Yes
Data Interface	XML
Online Demo	www.tensegrity-software.com

Contact Information

Tensegrity Software GmbH
Im Mediapark 6a
50670 Köln
Germany

Phone: +49 22 1 719 444 - 0
Fax: +49 22 1 719 444 - 29

info@tensegrity-software.com

<http://www.tensegrity-software.com>